

GREATER SPRINGFIELD/CLARK COUNTY AREA U.A.W. CAP COUNCIL

3671 URBANA RD.

(937) 390-3327

SPRINGFIELD, OHIO 45502



© 2014 UAW 24

PRINTED IN U.S.A.

Union Brothers and Sisters:

Politically, who represents us?

Companies have their respective societies, groups and Chamber of Commerce. They pay fees and memberships to belong to them. In return these groups offer benefits including political representation and lobbying for laws and politicians that represent their needs and wants.

Unions work to politically represent us. They follow politics and work for what protects and provides for us as well as fighting against bills and laws that take away or hurt us. In the past several years unions have joined together for fight against attacks on Worker's Compensation takeaways, Unemployment Benefit reductions and attacks on union representation and collective bargaining. Remember Issue 2 and Senate Bill 5?

"Right-To-Work-For-Less" It is still around and being discussed by anti-worker groups and politicians. Voters in Missouri defeated it just a few months ago. Six anti-worker/anti-union resolutions have been introduced in the Ohio statehouse and could move ahead at any time. They include Public Unions "Right-To-Work-For-Less" and Private Unions "Right-To-Work-For-Less".

None of our Union dues can be used for political reasons to fight nor promote legislation or political campaigns. Therefore, to support and represent us politically we have V-CAP. It is Voluntary Community Action Program. Your voluntary contributions allow the Union to represent and fight for us politically.

Gains made at the bargaining table can be taken away politically with a stroke of a pen. Therefore it is very important that we support our V-CAP program to protect what is important to us.

We will be having a campaign soon and hope that you will continue to support VCAP and our union's efforts to represent us politically.

Look for the bulletins in the plant and on Local 402's app and website!

In Solidarity,

Dan Davis

CAP Chairman

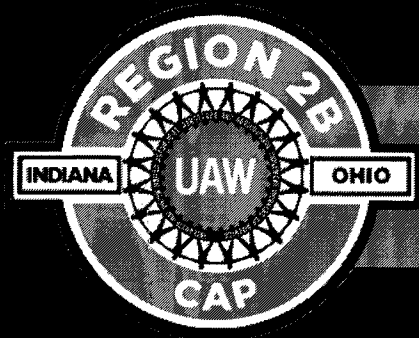
Chris Blizard

President UAW Local 402

Marcia Flax

President UAW Local 658

Paid for by Greater Springfield/Clark County Area U.A.W. CAP Council • Dan Davis, Chairman

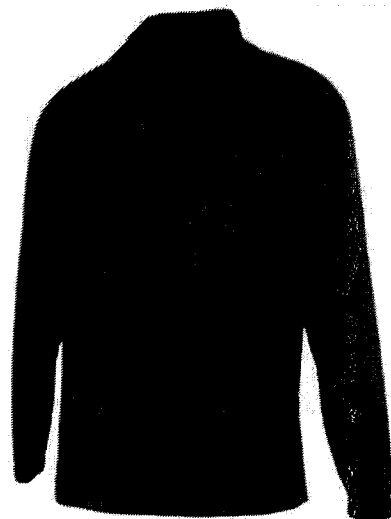


VCAP Special

Current ACTIVE Director and Platinum Club Members:
If you increase your monthly contribution by \$5.00,
you will receive the 1/4 Zip Fleece Pullover.

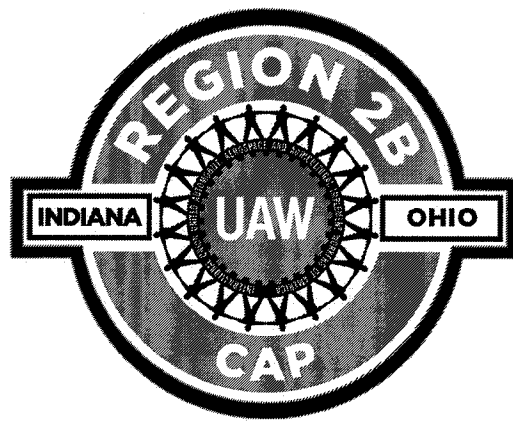


DIRECTOR'S CLUB



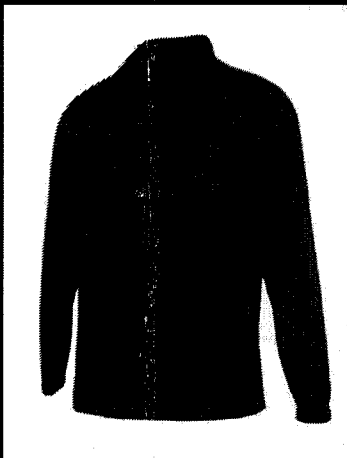
PLATINUM CLUB

****Must show proof of \$5.00 increase.****



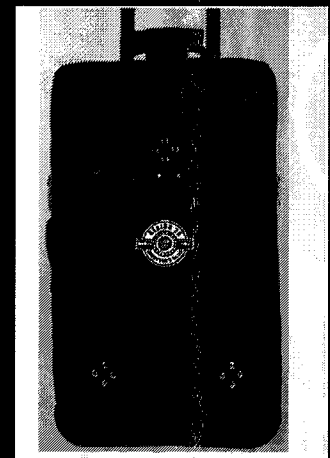
2021 V-CAP GIFT GUIDE

You will receive a Red 1/4 Zip Pullover as your First Year Gift after **completion** of Platinum Level V-CAP contributions of \$25 per month or a Black Suitcase as your First Year Gift after **completion** of Director Level V-CAP contributions of \$50 per month.



PLATINUM CLUB

FIRST YEAR GIFT



DIRECTOR'S CLUB

V-CAP CASH DRAWING

Annual V-CAP deductions are eligible for a cash drawing in the first quarter of each year. For every \$2 in voluntary contributions, you are entered in the drawing. (Example—\$100 = 50 entries)

"There 's a direct relationship between the ballot box and the bread box, and what the union fights for and wins at the bargaining table can be taken away in the legislative halls." Walter Reuther

DIRECTOR'S LEVEL

Gear Bag

\$50.00 per month V-CAP Contribution

+Platinum Gift/Activist Gift



PLATINUM LEVEL

Solidarity Long Sleeve T- Shirt

\$25.00 per month V-CAP Contribution

+Activist Gift



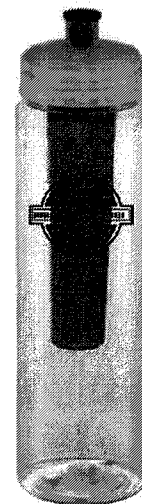
Front

Back

ACTIVIST LEVEL

UAW Chiller Water Bottle

\$15.00 per month V-CAP Contribution



region2b.uaw.org/cap-program

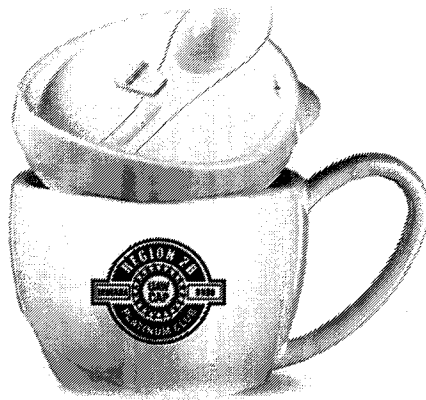
2021 RETIREE V-CAP GIFT GUIDE

Director's Level

\$10 per month or

\$120 per year

Coffee Mug

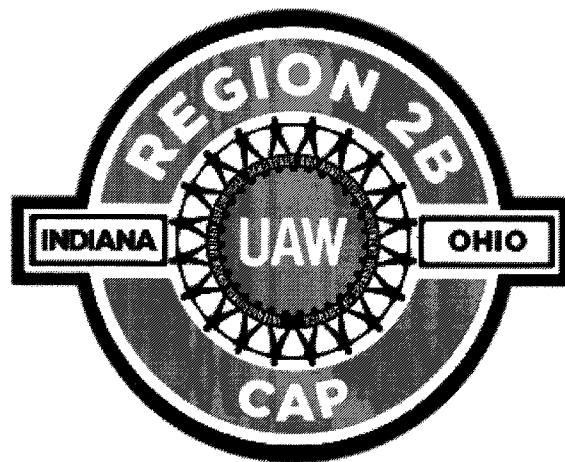


Platinum Level

\$5 per month or

\$60 per year

Soup Bowl



**** 2021 Gift will be given out in the first quarter of 2022. ****

jb/opeiu494afl-cio

UAW Region 2B Retirees Platinum Club

Date ____/____/____ Event _____

Name _____ Local _____

Phone _____ (cell/home) _____

email _____

Size _____

Payment:

Check Off \$5 or more per month (Attach Filled out Retiree Check Off Card)

Notes _____

Cash/Check Payment

Cash \$ _____ Check \$ _____ # _____

CAP Tickets Given For Cash Payment

	Date of CAP Ticket Purchase
1	
2	
3	
4	
5	
6	

Date ____/____/____

Signed Up By:

